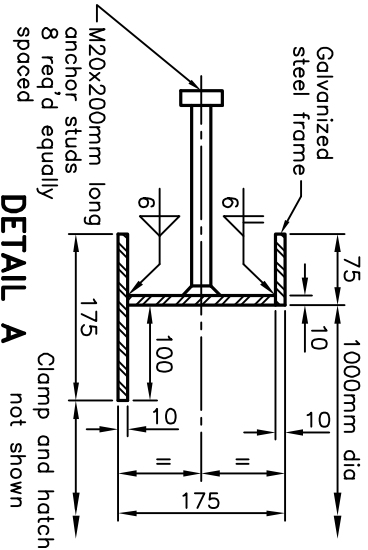
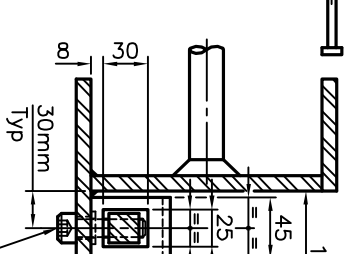


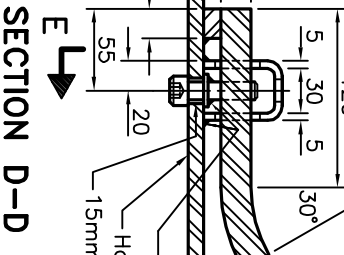
**SECTION A-A**



**SECTION E-E**



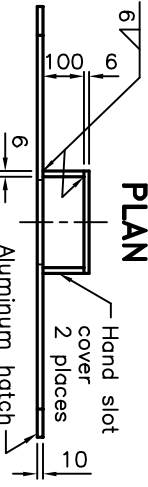
**SECTION D-D**



**NOTES:**

- A All steel shall be according to CSA G40.20/G40.21, Grade 300W.
- B All steel shall be hot dip galvanized after fabrication according to CAN/CSA G164M except for stainless steel.
- C All welded construction shall be according to CSA W59 for steel and CSA W59.2 for aluminum. Any company undertaking welded fabrication or erection or both according to CSA W59 or CSA W59.2 shall be certified according to CSA W47.1, Division 2.1, or CSA W47.2, Division 2, respectively. All welding shall be carried out by welders having a CSA W47.1 or CSA W47.2 identification card valid for the type of welding to be done and for the duration of the welding work.
- D Anchor studs shall be attached using a stud welding process.
- E Access hatch components shall be aluminum according to CSA S157/S157.1 for Alloy 6061-T6 or T651.
- F All sharp edges shall be rounded 2mm.
- G All dimensions are in millimetres unless otherwise shown.

**SECTION B-B**



ONTARIO PROVINCIAL STANDARD DRAWING

DECK, VOIDS

ACCESS HATCH FOR CONCRETE BRIDGES

ASSEMBLY

Nov 2017 Rev 2

OPSD 3339.100

