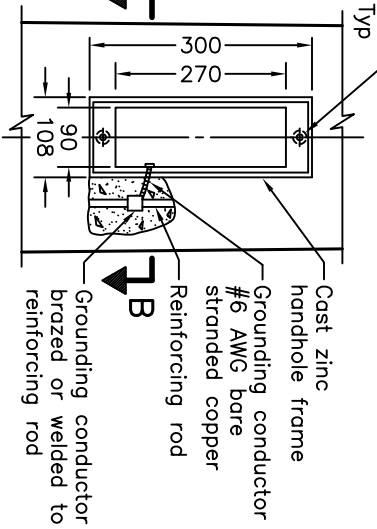
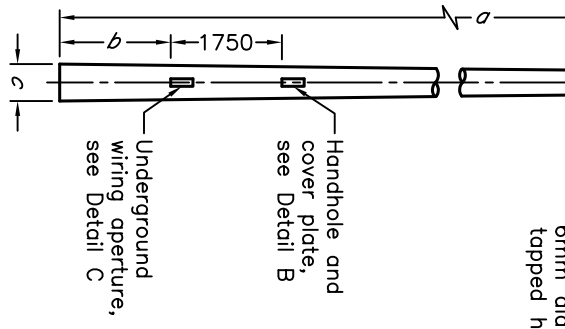


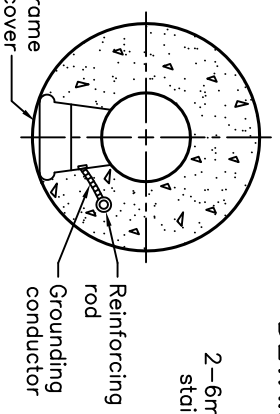
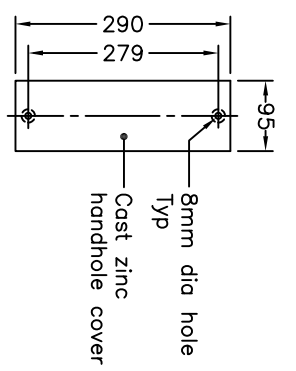
**FRONT VIEW**

**SIDE VIEW**

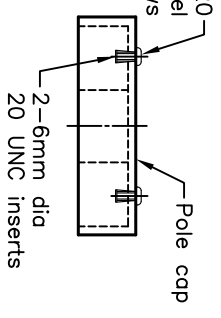
**DETAIL A**



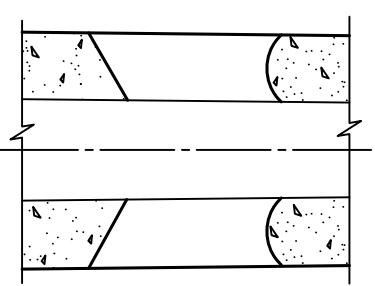
**DETAIL B**



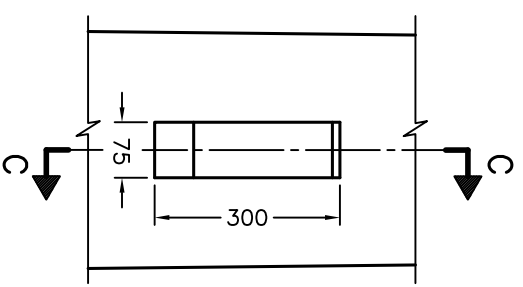
**SECTION B-B**



**DETAIL D**



**SECTION C-C**



**DETAIL C**

POLE FABRICATION DATA				
Pole Length $d$ m	Aperture Location $b$ mm	Bottom Diameter $c$ mm	Top Diameter $d$ mm	
9.0	1150	290	165	
10.7	1150	312	165	
12.5	1500	338	165	
14.0	1500	373	165	
15.8	1750	401	165	
18.3	2670	439	165	
21.3	2670	485	165	

**NOTES:**

1 Wiring apertures not used shall be covered with a stainless steel or aluminum plate.

A All dimensions are in millimetres unless otherwise shown.

ONTARIO PROVINCIAL STANDARD DRAWING

**SPUN CONCRETE POLE**

Nov 2012 Rev 3



OPSD 2410.01