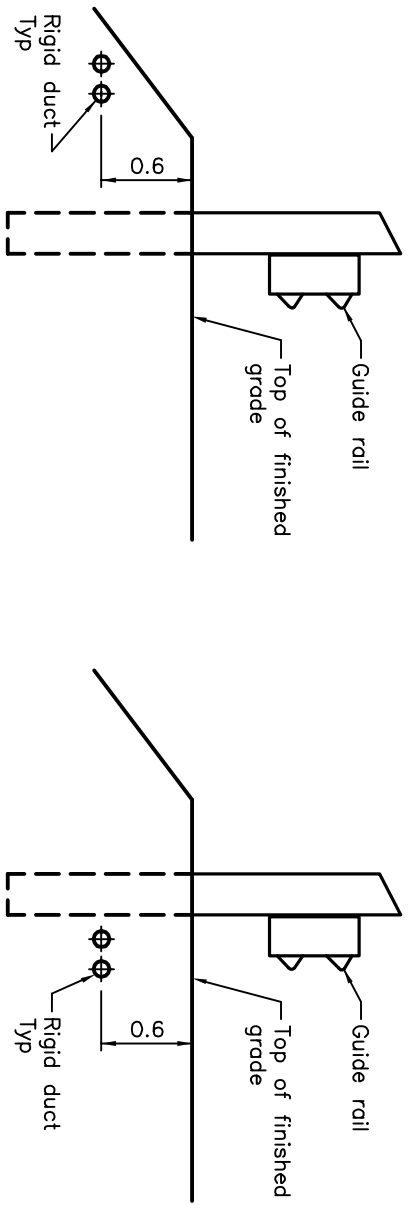


**DUCT EXTENSION AT END OF STRUCTURE
PLAN**

NOTES:

- 1 Buried ducts shall be connected to the embedded ducts at end of structure. Refer to Contract Documents for the termination detail of the embedded ducts. Hand dig or hydrovac to expose termination of embedded ducts.
 - 2 Expansion and deflection fitting assemblies shall be installed along straight section of buried ducts within 0.3m of structure. Provide local loose expanded polystyrene foam fill bedding for the fitting assembly.
 - 3 Extend the fish wire and trace wire through the duct to the pole handhole.
 - 4 Terminate the rigid duct direct buried behind the guide rail, 600mm below grade. Extend the fish wire and trace wire through and plug the end of the duct.
- A All dimensions are in metres unless otherwise shown.



SECTION A-A

SECTION B-B

ONTARIO PROVINCIAL STANDARD DRAWING	Nov 2015	Rev 0	
UNDERGROUND RIGID DUCT CONNECTION AT CONCRETE STRUCTURE WITHOUT EXPANSION JOINT	OPSPD 2102.020		