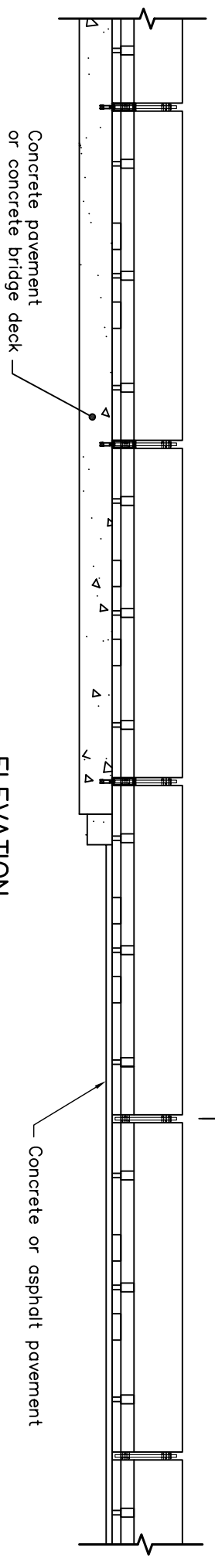


Temporary concrete barrier restraint system – strapped
 MTOD 911.163 or MTOD 911.164

Temporary concrete barrier,
 Note 2



ELEVATION

NOTES:

- 1 Bridge deck expansion joint shall be located beyond tie-down strap.
 - 2 Type M temporary concrete barrier shown. Transition to another connection type shall be completed according to OPSD 911.340.
 - 3 When the level area between the back of the barrier and the upper edge of an excavation is less than one metre, used during construction requires the Owner to have a signed and sealed memorandum from an Engineer for each installation used during construction according to Ontario Regulation 213/91.
- A This MTOD shall be read in conjunction with OPSD 911.160, MTOD 911.163, and MTOD 911.164.
- B System configuration meets NCHRP Report 350 TL-3.
- C All dimensions are in millimetres unless otherwise shown.

MINISTRY OF TRANSPORTATION ONTARIO DRAWING	February 2018	Rev 1
GUIDE RAIL SYSTEM, CONCRETE BARRIER TYPE M CONNECTION	-----	-----
INSTALLATION – TEMPORARY RESTRAINT SYSTEM TRANSITION TO STRAPPED TCB	-----	-----
MTOD 911.171		