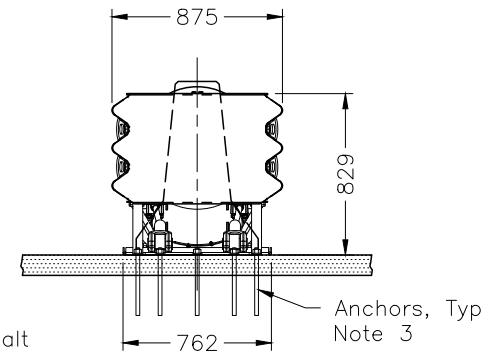
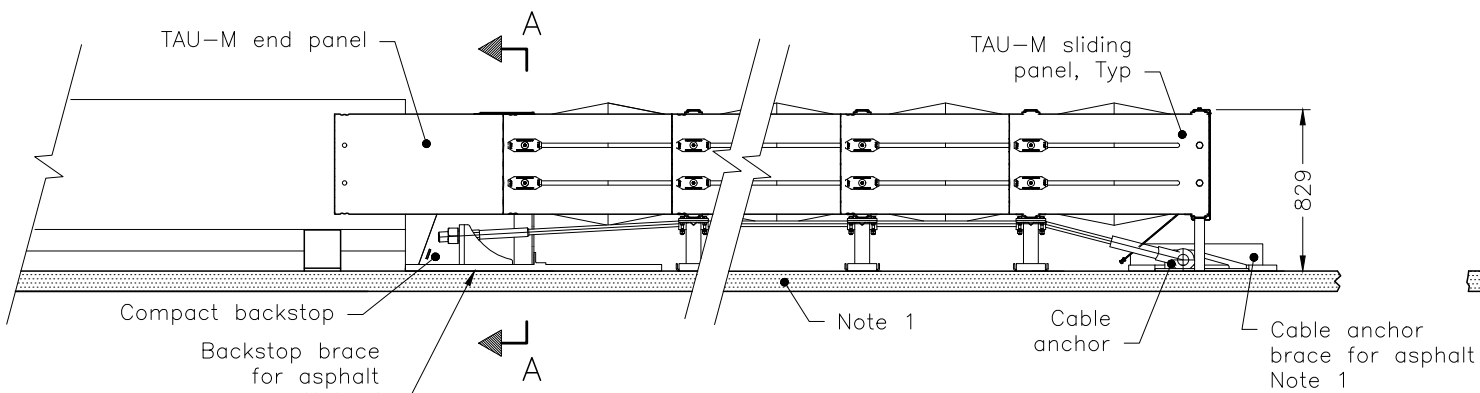


SYSTEM CONFIGURATION	TL-2	TL-3
NUMBER OF CARTRIDGES REQUIRED	4	7
SYSTEM LENGTH	4334	6934

PLAN



ELEVATION

SECTION A-A

NOTES:

- 1 Braces for asphalt shall be used when system is placed on asphalt over granular. When system is placed on a concrete pad, the pad shall be according to OPSD 923.001.
- 2 Adjacent temporary concrete barrier unit shall be anchored according to OPSD 923.002. Barrier beveling is not required.
- 3 Anchors shall be according to the manufacturer's specifications.
- A Delineation shall be according to OPSD 984.203.
- B The system depicted here is a proprietary product.
- C System configuration meets AASHTO MASH TL-2 or TL-3 (Table 1).
- D All dimensions are in millimetres unless otherwise shown.

MINISTRY OF TRANSPORTATION ONTARIO DRAWING	April 2019	Rev 0
ENERGY ATTENUATOR, CRASH CUSHION TAU-M SYSTEM INSTALLATION – TEMPORARY UNIDIRECTIONAL		
MTOD – 923.396		