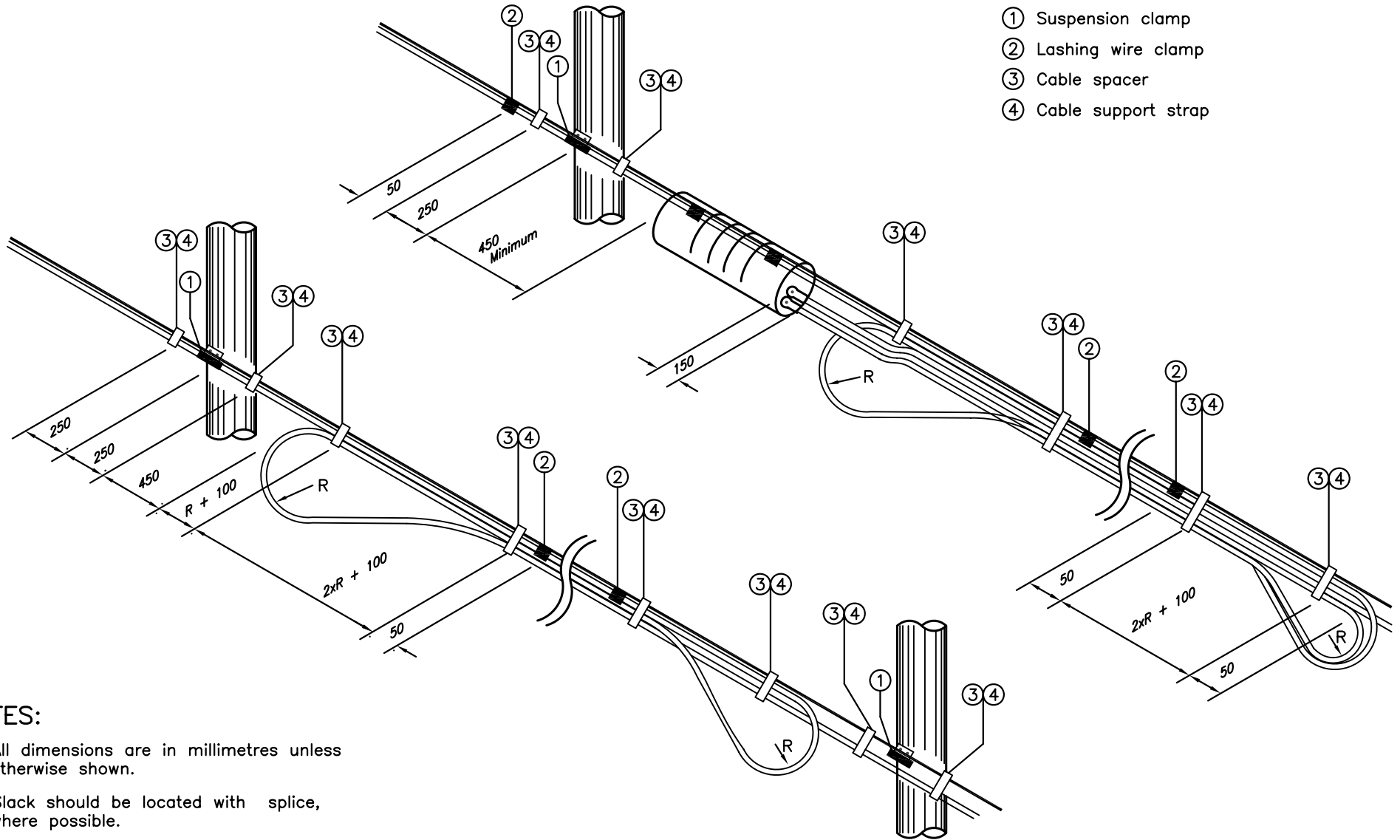


- ① Suspension clamp
- ② Lashing wire clamp
- ③ Cable spacer
- ④ Cable support strap



NOTES:

- A. All dimensions are in millimetres unless otherwise shown.
- B. Slack should be located with splice, where possible.
- C. Slack should be 5% of the F/O cable run, unless otherwise noted.
- D. The operational bending radius 'R', should be a minimum of:
 $R=10 \times D$
 where D is the outer diameter of the F/O cable.

MINISTRY OF TRANSPORTATION ONTARIO DRAWING		Date	Sept. 2007	Rev	0
ADVANCED TRAFFIC MANAGEMENT SYSTEM AERIAL SPLICE ENCLOSURE AND SLACK STORAGE		-----			

		MTOD - 2910.020			