

NOTE 1

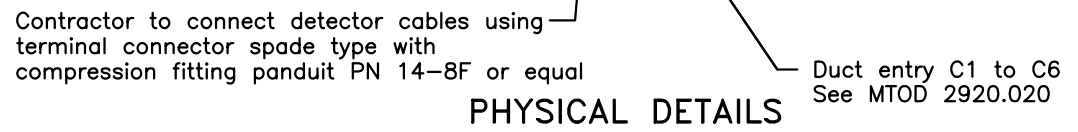
	T14	T13	T12	T11	T10	T9	T8	T7	T6	T5	T4	T3	T2	T1	
INPUT FILE 'I'	NOT WIRED	COL. SB/WB LOOP A	COL. SB/WB LOOP 9	COL. SB/WB LOOP 7	COL. SB/WB LOOP 5	COL. SB/WB LOOP 3	COL. SB/WB LOOP 1	NOT WIRED	EXP. NB/EB LOOP A	EXP. NB/EB LOOP 9	EXP. NB/EB LOOP 7	EXP. NB/EB LOOP 5	EXP. NB/EB LOOP 3	EXP. NB/EB LOOP 1	U (TERMINALS 4 & 5) (ODD NUMBERED LOOPS)
	NOT WIRED	COL. SB/WB LOOP 0	COL. SB/WB LOOP B	COL. SB/WB LOOP 6	COL. SB/WB LOOP 8	COL. SB/WB LOOP 2	COL. SB/WB LOOP 4	NOT WIRED	EXP. NB/EB LOOP 0	EXP. NB/EB LOOP B	EXP. NB/EB LOOP 6	EXP. NB/EB LOOP 8	EXP. NB/EB LOOP 2	EXP. NB/EB LOOP 4	L (TERMINALS 6 & 7) (EVEN NUMBERED LOOPS)

INPUT FILE 'J'	NOT WIRED	NOT WIRED	NOT WIRED	NOT WIRED											U (TERMINALS 4 & 5) (ODD NUMBERED LOOPS)
	NOT WIRED	NOT WIRED	NOT WIRED	NOT WIRED											L (TERMINALS 6 & 7) (EVEN NUMBERED LOOPS)

← LOOPS FOR MISCELLANEOUS ROADWAYS →
NOTE 2

PRE-ASSIGNED LOOP CONNECTIONS TO I & J FILES
REAR VIEW

- NOTES**
- EXP./NB/EB = express, northbound or eastbound lane loop
COL./SB/WB = collector, southbound or westbound lane loop
QWS loops may deviate from this assignment to maximize capacity.
 - Open locations are used for loops on ramps, transfer roads, HOV lanes & other roadway. In areas with ramp metering (RMS) terminals T1, T2, & T3 are reserved for RMS loops. For specific assignment refer to MTO 2950.013.
 - For equipment details see "Ontario Traffic Signal Control Equipment Specifications".



MINISTRY OF TRANSPORTATION ONTARIO DRAWING	Date	Sept. 2007	Rev	0
ADVANCED TRAFFIC MANAGEMENT SYSTEM		-----		
FIELD CONNECTION OF DETECTOR LOOPS TO CABINET INPUT FILES		-----		
MTOD - 2950.010				