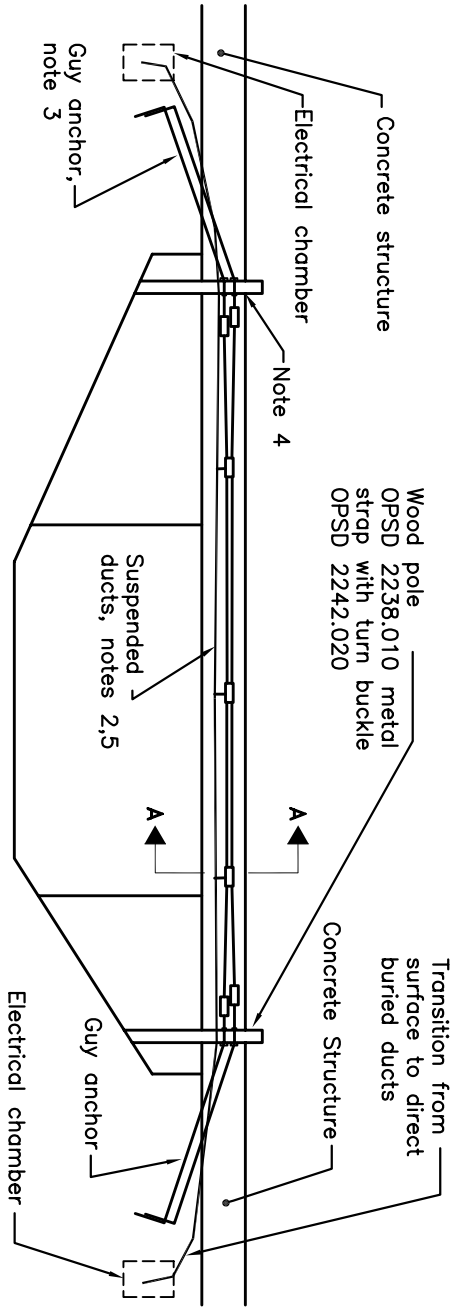


SECTION A-A



ELEVATION

TABLE 1

Location	Reference point	Pole offset from struct (m)	Pole identification and minimum pole height (m)			Pole locations (m)	Number of existing surface mount ducts (note 5)						
			A	B	C								
			ID	Height	ID	Height	ID	Height	A	B	C	50 mm	100mm

NOTES:

- A. For installation of aerial messenger cable, refer to OPSD 2245.010
- 1. Length of wire rope shall vary in order to compensate for sag in the messenger cable and maintain constant duct elevation.
- 2. Mounting height for support cable shall be located such that the final elevation of the suspended duct system is constant and at the same elevation as the surface mounted duct system.
- 3. Support the existing power and communications cables throughout the transition of ducts from direct buried to aerial suspension. Guy anchor shall be long enough to allow the power and communications cables to be lashed to the guy anchor cable for transition to the messenger cable. Suspended ducts may need to be supported by guy wires depending on site conditions.
- 4. Number of poles and span may vary. Refer to table 1.
- 5. Only ducts containing cables shall be suspended.

MINISTRY OF TRANSPORTATION ONTARIO DRAWING		Date	Sept. 2007	Rev	0
ADVANCED TRAFFIC MANAGEMENT SYSTEM					
<b>AERIAL SUSPENSION OF EXISTING SURFACE MOUNTED CONDUITS</b>					
MTOD - 2910.015		----- ----- -----			