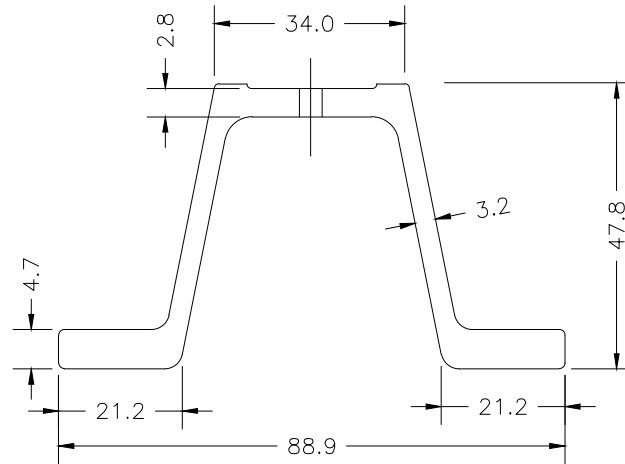
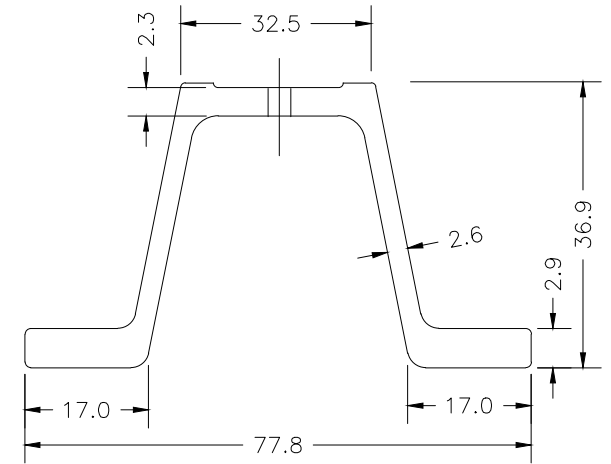


SIDE FRONT TOP

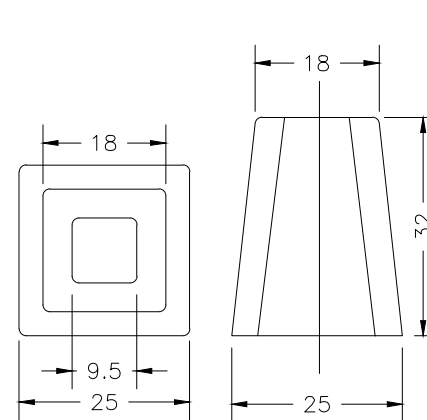
SPACER FOR LAP SPLICE
Gold coloured nickel/steel



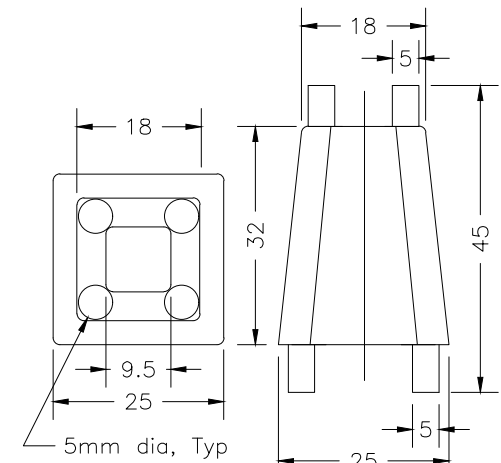
4.46 kg/m RIB-BAK POST



2.61 kg/m RIB-BAK POST



Front View Top View
TYPE A, Note 1 and 3



Front View Top View
TYPE B, Note 2 and 3

SPACER FOR SIGN TO POST

NOTES:

- 1 Type A sign spacer shall be used with 2.61 kg/m upper post.
- 2 Type B sign spacer shall be used with 4.46 kg/m upper post.
- 3 Sign spacers shall be molded from Acrylonitrile Butadiene Styrene thermoplastic resin.

A Posts and hardware depicted on this MTOD are proprietary.

B Posts shall be manufactured from hot rolled carbon steel bars according to Marion Steel Company Grade SP-80 having minimum yield strength of 552 MPa according to ASTM A 499.

C Posts shall be perforated with 11mm diameter holes @ 51mm c/c spacing or 9.4mm diameter holes @ 25mm c/c spacing.

D Posts shall be hot dip galvanized after fabrication.

E Lap splice spacer bar shall be fabricated from hot rolled carbon steel bars according to ASTM A36M.

F All dimensions are in millimetres unless otherwise shown.

MINISTRY OF TRANSPORTATION ONTARIO DRAWING		July 2018	Rev 0
SMALL SIGN SUPPORT SYSTEM LAP SPLICE RIB-BAK BREAKAWAY SYSTEM COMPONENTS		-----	
		MTOD 987.101	