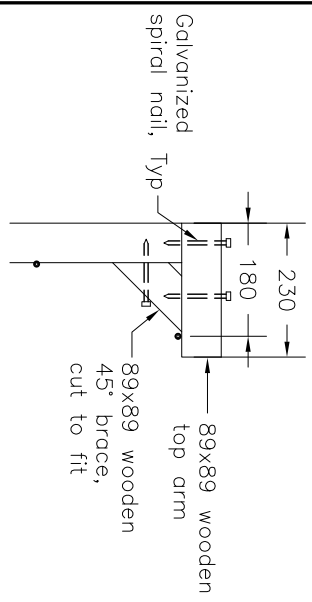
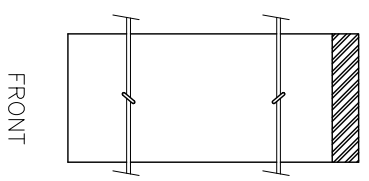
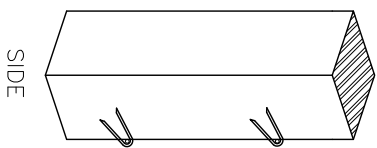


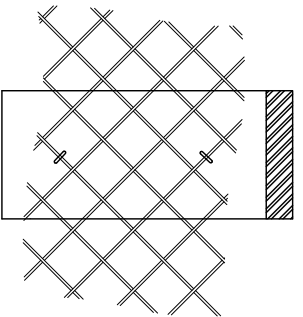
**WILDLIFE FENCE – TYPE B**



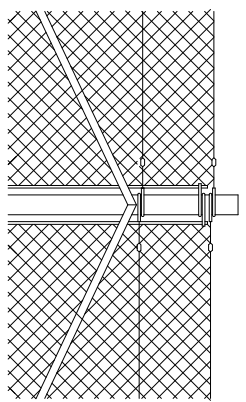
**POST TOP DETAIL**



FRONT  
(TENSION WIRES)



FRONT  
(FENCE FABRIC)



**STRAINING POST**

**NOTES:**

1. For footing details, refer to MTOD 973.141.
  2. For wire tie details, refer to MTOD 973.142
- A. Fence as viewed from the roadway.
- B. All dimensions are in millimetres unless otherwise shown.

MINISTRY OF TRANSPORTATION ONTARIO DRAWING

**WILDLIFE FENCE – TYPE B**

**ON WOOD POSTS  
INSTALLATION**

September 2017

Rev 0

MTOD 973.134