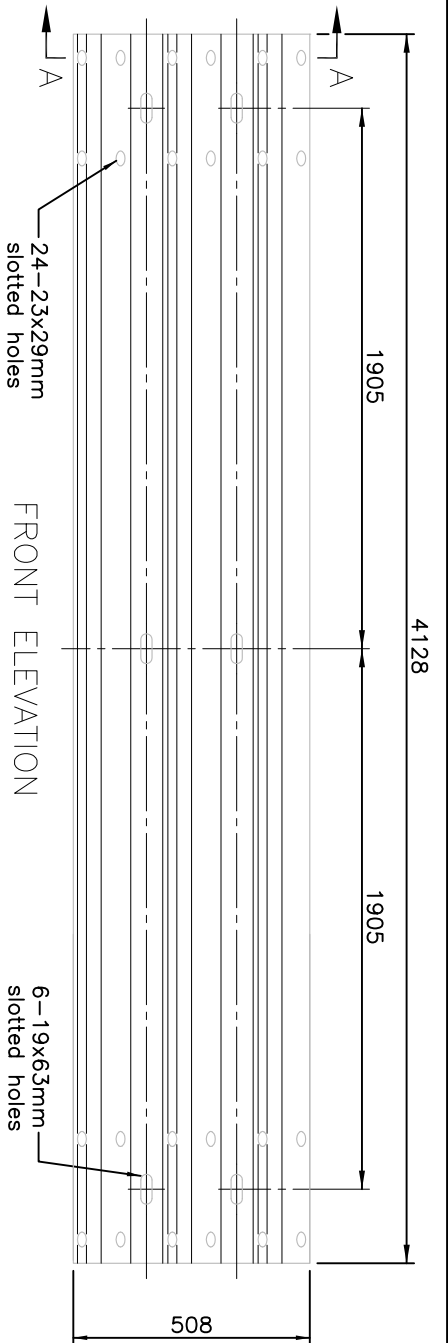


ENLARGED SECTION A-A

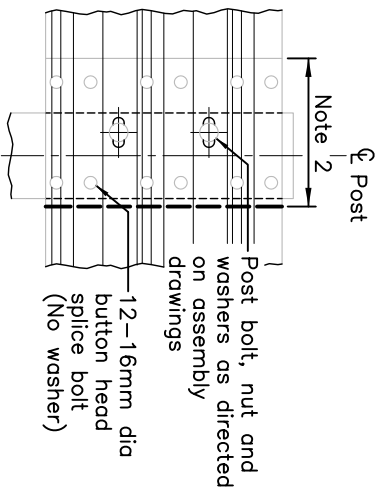
Note 1



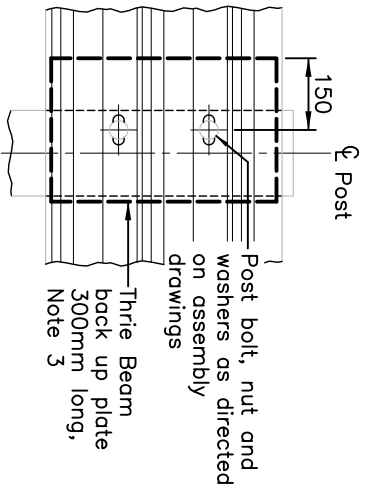
24-23x29mm
slotted holes

FRONT ELEVATION

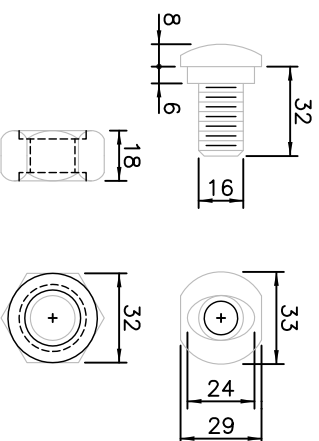
6-19x63mm
slotted holes



SPLICE DETAIL



THIRIE BEAM
BACK UP PLATE
DETAIL



SPLICE BOLT AND NUT

NOTES:

- 1 Thickness of rail shall be as shown on assembly drawings.
- 2 Overlap guide rail elements in direction of traffic flow.
- 3 The 300mm section of Thirie Beam (back up plate) shall be installed at intermediate posts only.
- A Thirie Beam shall conform to AASHTO Specification M180 Type 2.
- B All dimensions subject to manufacturing tolerances unless otherwise indicated.
- C All dimensions are in millimetres or metres unless otherwise shown.

THIRIE BEAM GUIDE RAIL

RAIL DETAIL

Date	JUNE 1993	Rev	
------	-----------	-----	--

SS10-20